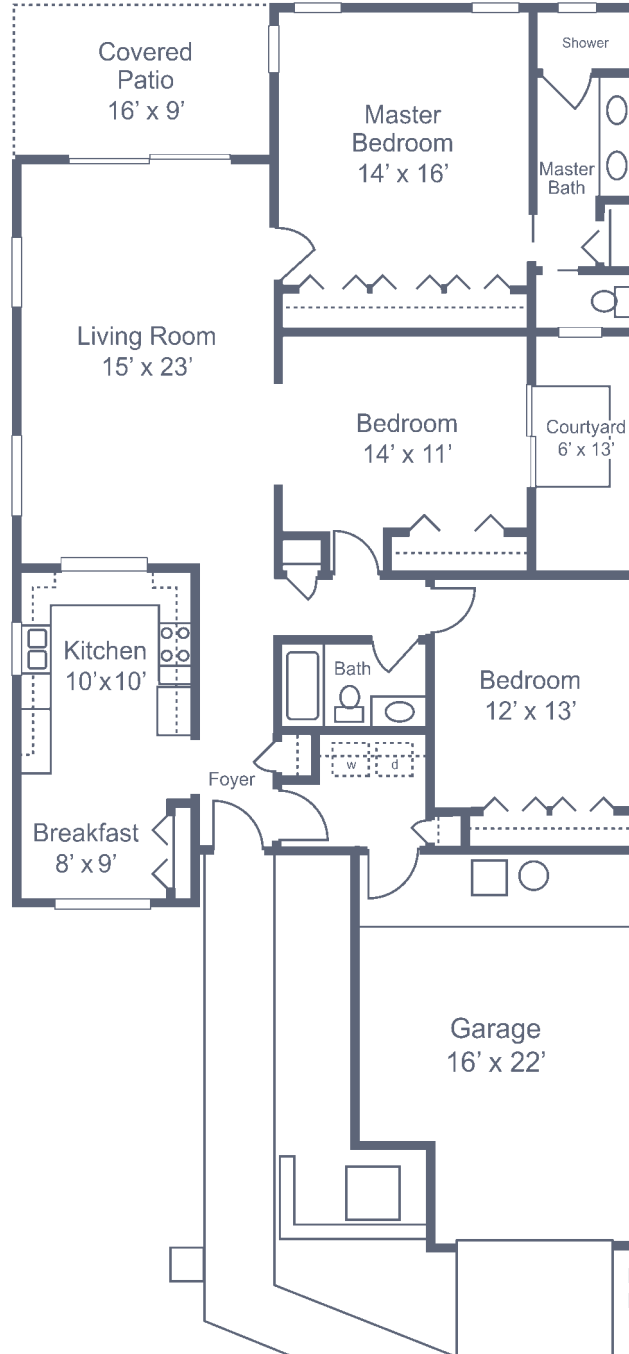


# Garden Homes

## Camelia

Three Bedroom • Two Bath • 1,689 sq. ft.



Dimensions are approximate.  
Floor plans may vary.



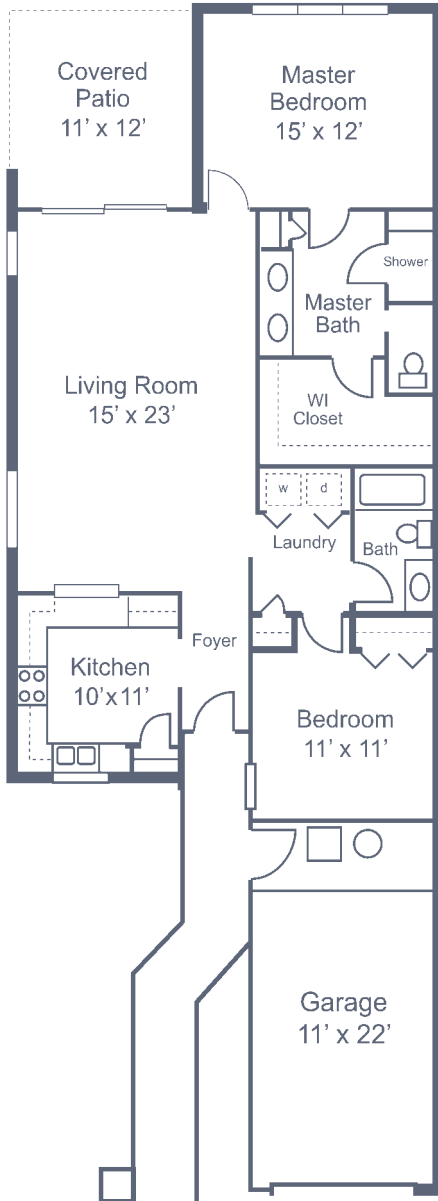
## Cypress Village

4600 Middleton Park Circle East • Jacksonville, FL 32224  
904-223-6100 • [CypressVillageRetirement.com](http://CypressVillageRetirement.com)

# Garden Homes

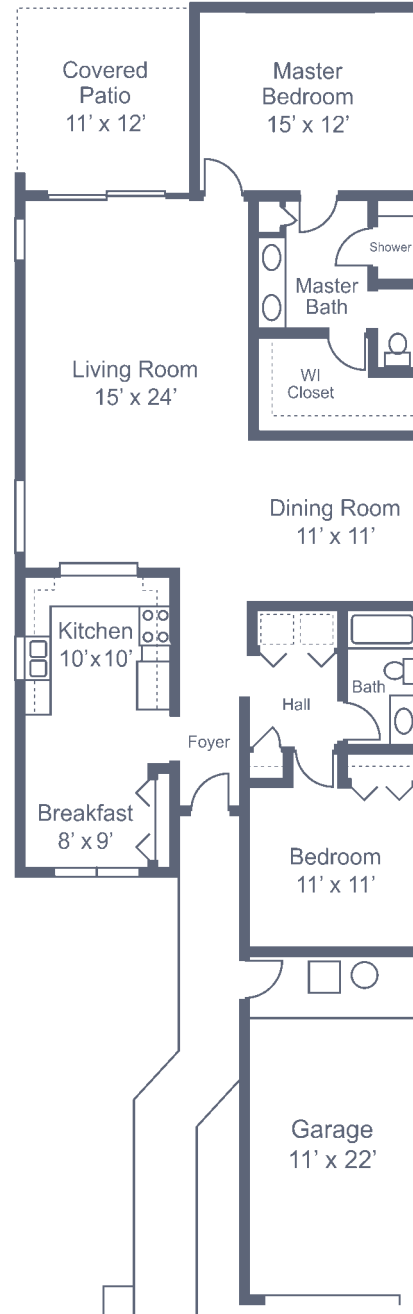
## Aster

Two Bedroom • Two Bath  
1,140 sq. ft.



## Bougainvillea

Two Bedroom • Two Bath  
1,420 sq. ft.



Dimensions are approximate.  
Floor plans may vary.



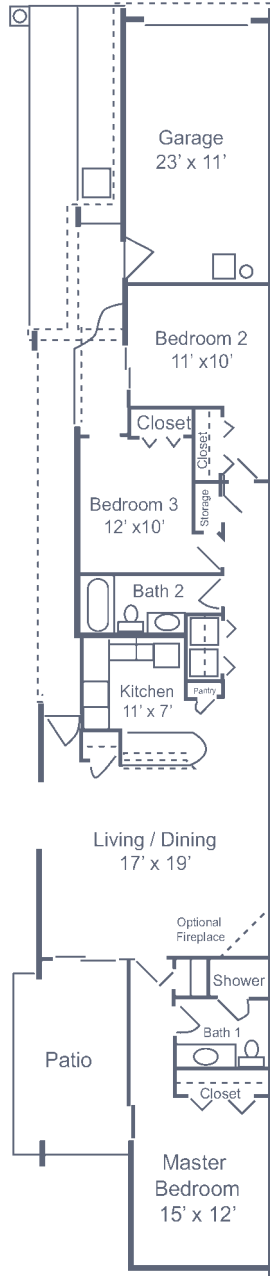
## Cypress Village

4600 Middleton Park Circle East • Jacksonville, FL 32224  
904-223-6100 • [CypressVillageRetirement.com](http://CypressVillageRetirement.com)

# Patio Homes

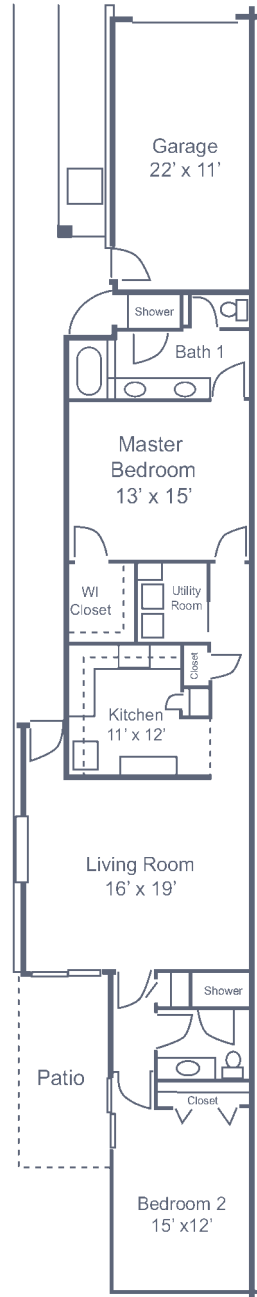
## The Cyrilla

Three Bedroom • Two Bath  
1,406 sq. ft.



## The Cyrilla II

Two Bedroom • Two Bath  
1,454 sq. ft.



Dimensions are approximate.  
Floor plans may vary.



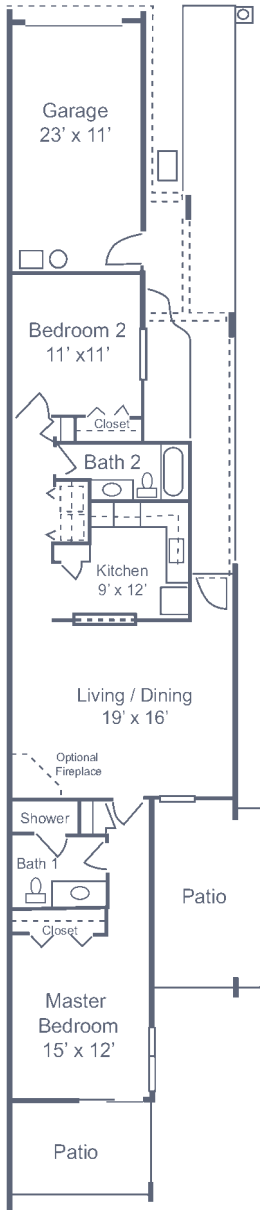
## Cypress Village

4600 Middleton Park Circle East • Jacksonville, FL 32224  
904-223-6100 • CypressVillageRetirement.com

# Patio Homes

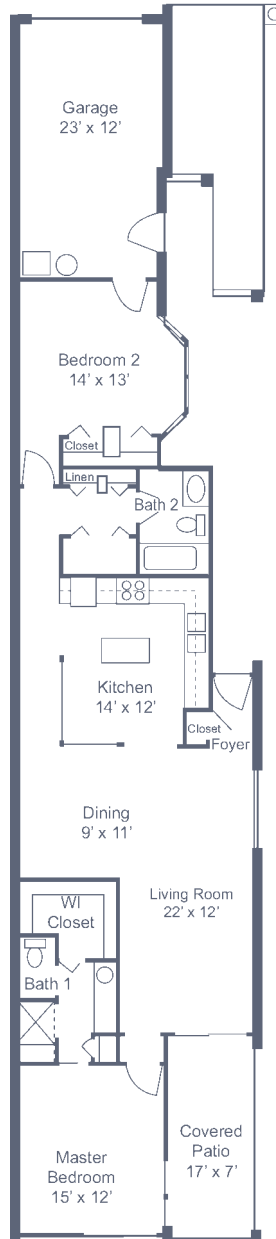
## The Loblolly

Two Bedroom • Two bath  
1,187 sq. ft.



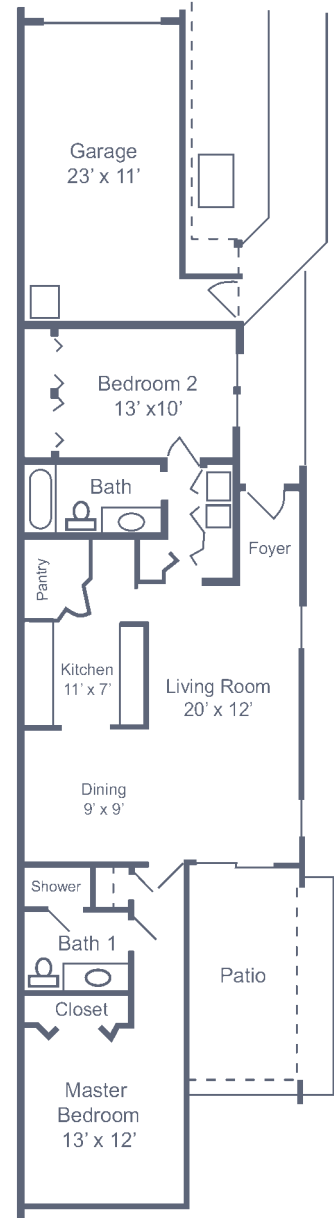
## The Loblolly II

Two Bedroom • Two bath  
1,420 sq. ft.



## The Mimosa

Two Bedroom • Two bath  
1,171 sq. ft.



Dimensions are approximate.  
Floor plans may vary.



## Cypress Village

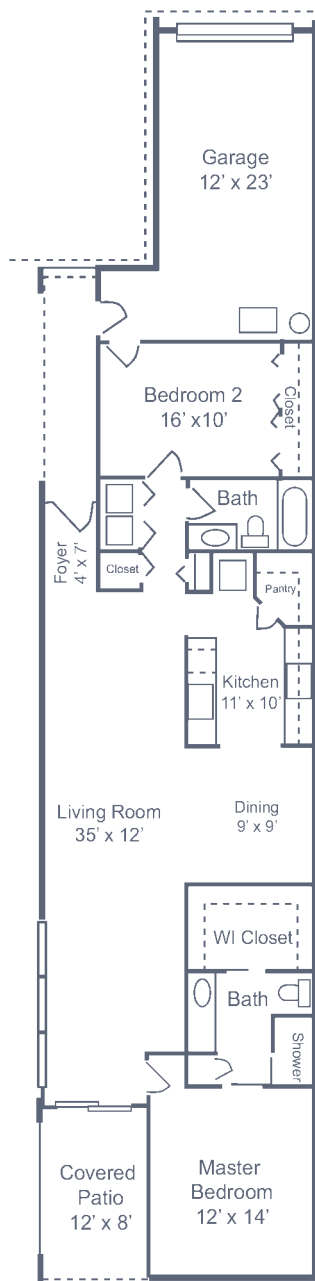
4600 Middleton Park Circle East • Jacksonville, FL 32224  
904-223-6100 • CypressVillageRetirement.com



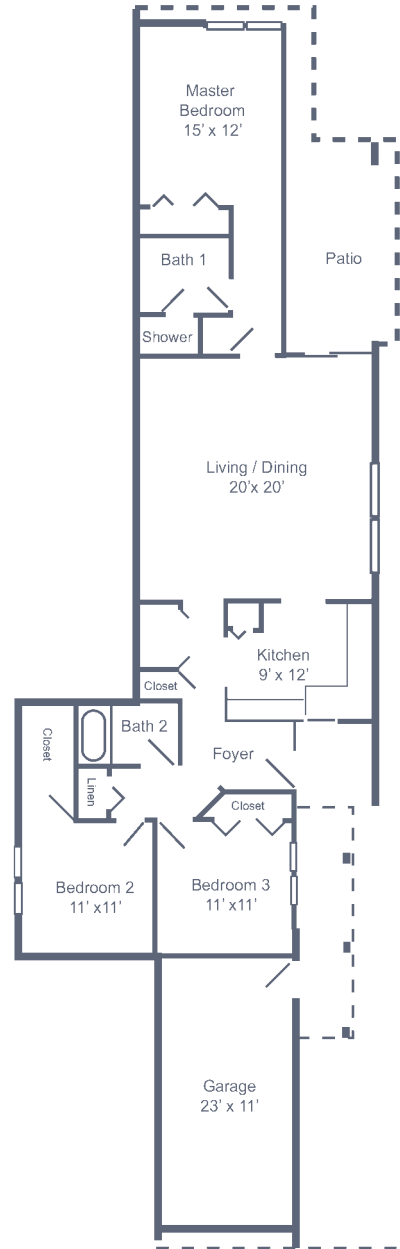
Managed by Life Care Services®

# Patio Homes

**The Mimosa II**  
 Two Bedroom • Two Bath  
 1,365 sq. ft.



**Lantana**  
 Three Bedroom • Two Bath  
 1,528 sq. ft.



Dimensions are approximate.  
 Floor plans may vary.



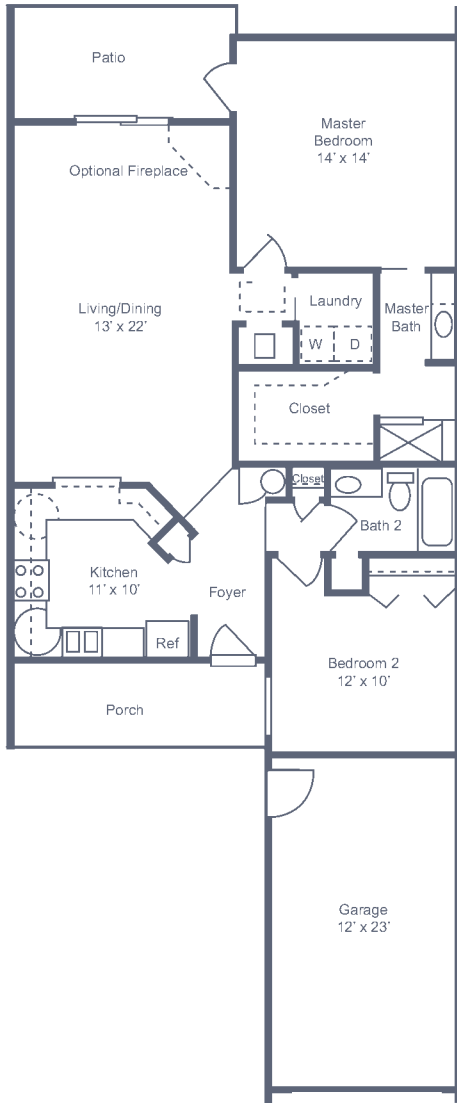
## Cypress Village

4600 Middleton Park Circle East • Jacksonville, FL 32224  
 904-223-6100 • CypressVillageRetirement.com

# Patio Homes

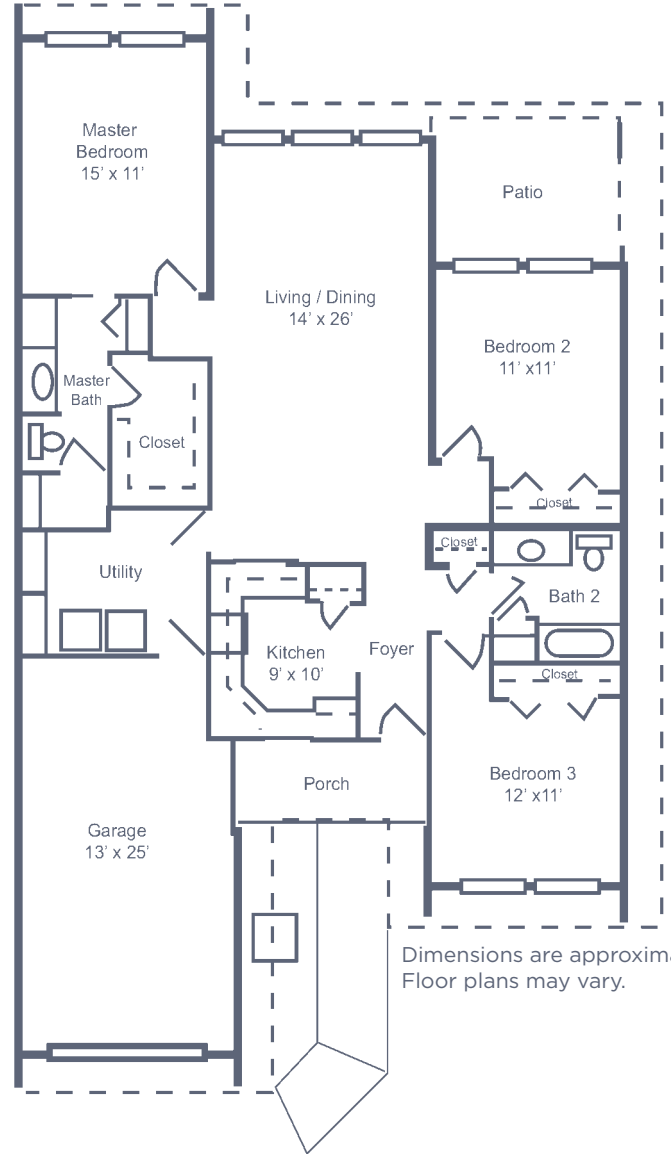
## Bald Cypress

Two Bedroom • Two Bath  
1,454 sq. ft.



## River Oak

Three Bedroom • Two Bath  
1,540 sq. ft.



Dimensions are approximate.  
Floor plans may vary.



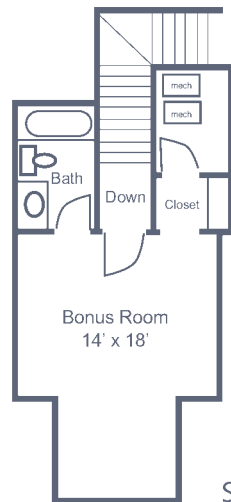
## Cypress Village

4600 Middleton Park Circle East • Jacksonville, FL 32224  
904-223-6100 • CypressVillageRetirement.com

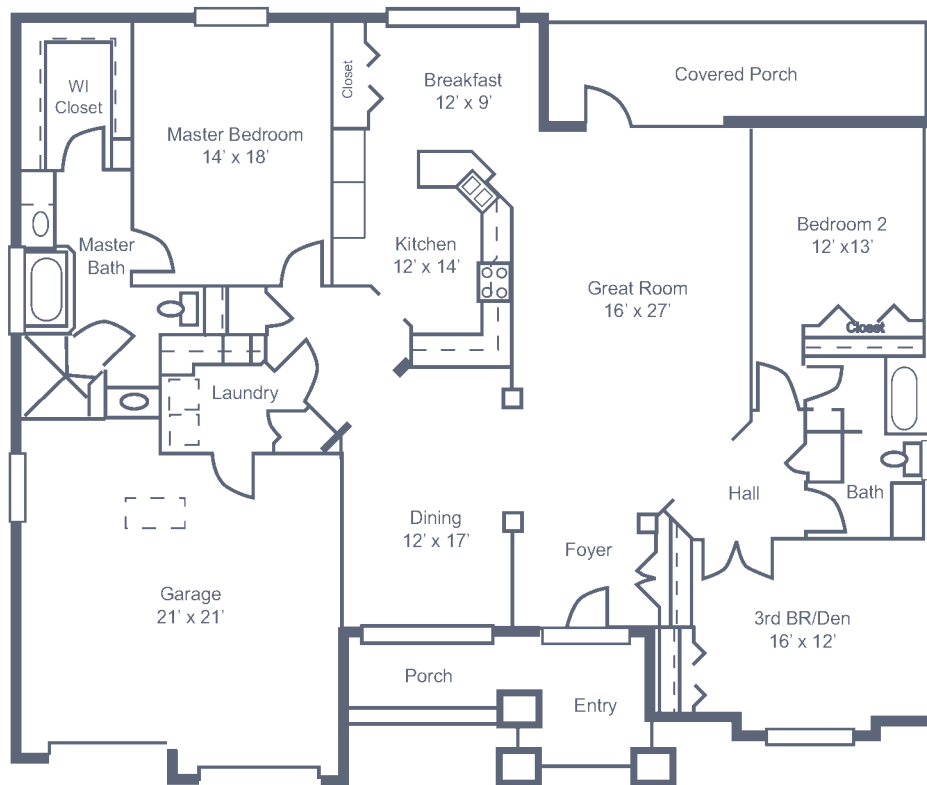
# Fairway Homes

## Oakmont

Two Story  
Three Bedroom/Den  
Three Bath + Bonus Room  
3,176 sq. ft.



Second Level (406 sq. ft.)



First Level (2,770 sq. ft.)

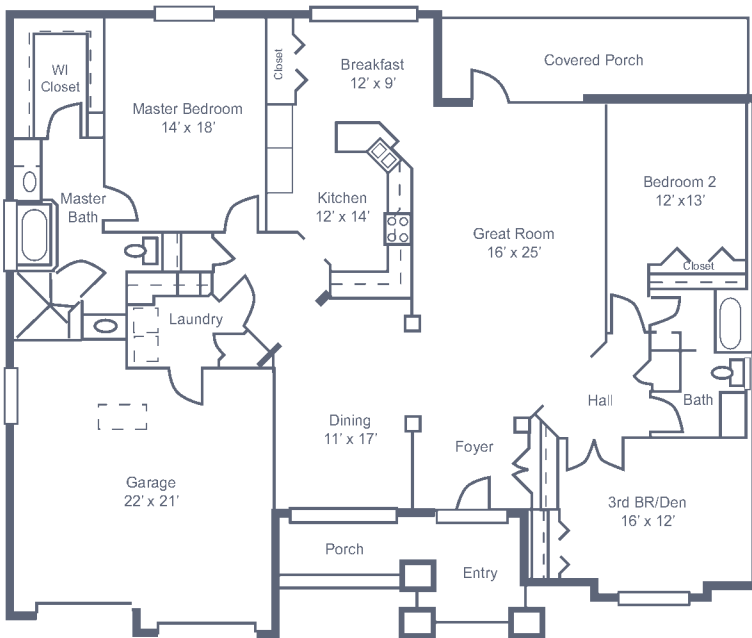
Dimensions are approximate.  
Floor plans may vary.



## Cypress Village

4600 Middleton Park Circle East • Jacksonville, FL 32224  
904-223-6100 • CypressVillageRetirement.com

# Fairway Homes

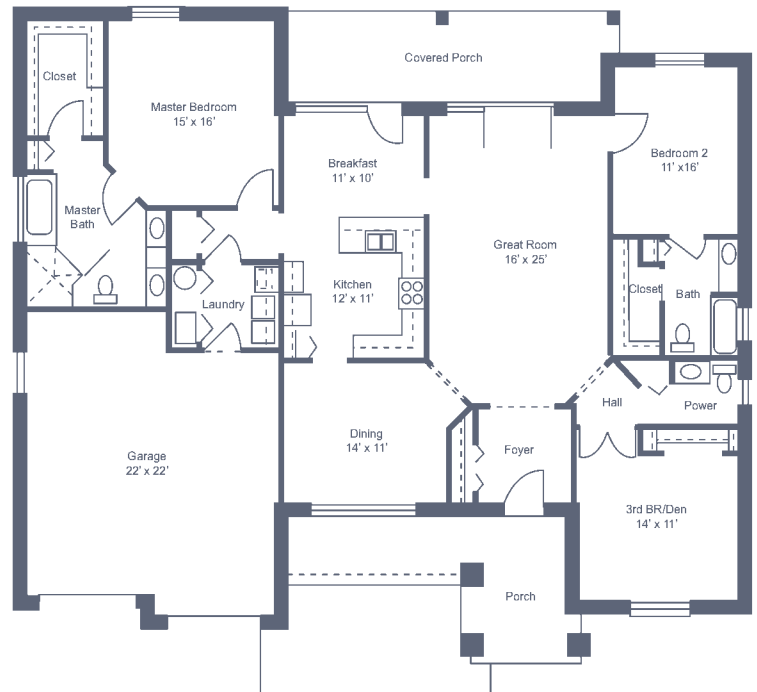


## The Murfield

Three Bedroom/Den • Two Bath  
2,364 sq. ft.

## The Merion

Three Bedroom/Den  
Two and a Half Bath  
2,170 sq. ft.



Dimensions are approximate.  
Floor plans may vary.



## Cypress Village

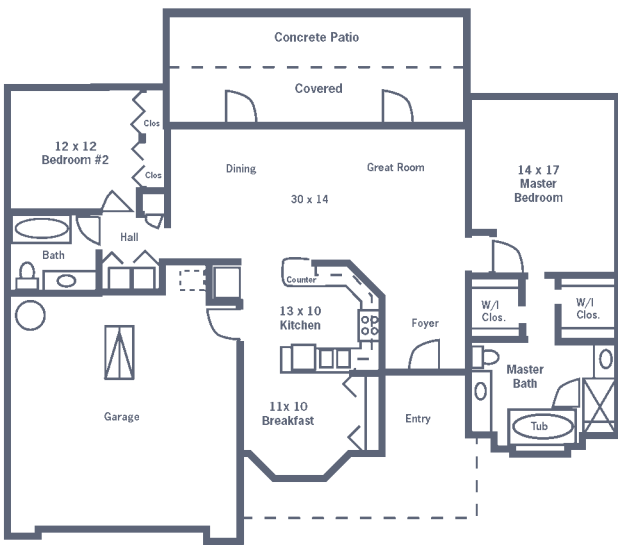
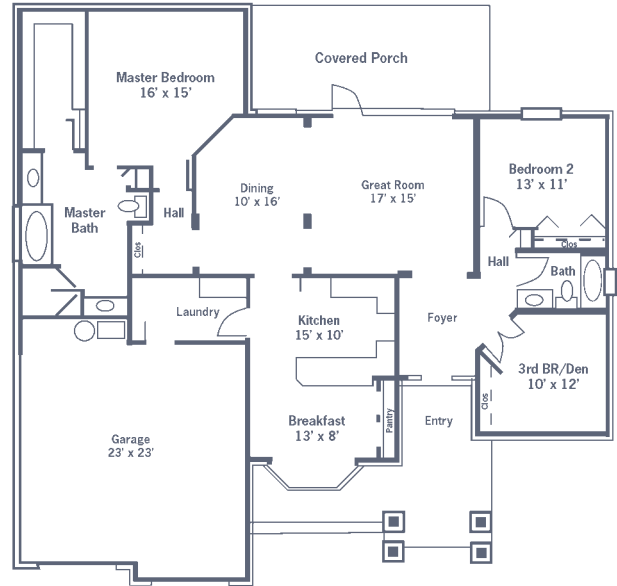
4600 Middleton Park Circle East • Jacksonville, FL 32224  
904-223-6100 • CypressVillageRetirement.com



# Fairway Homes

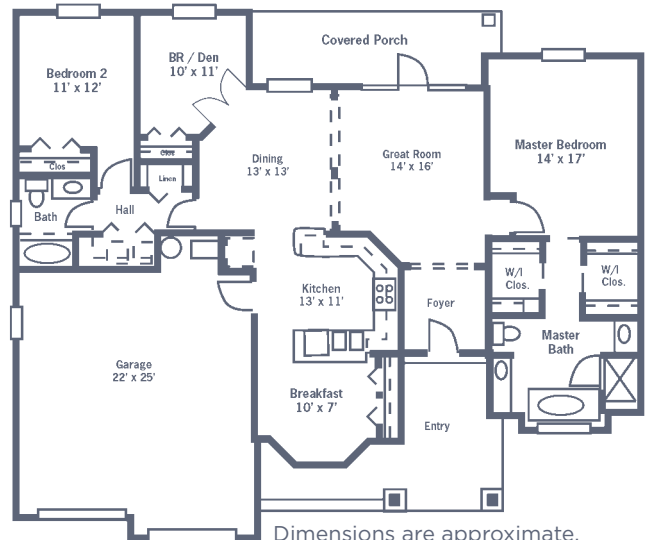
## The Pinehurst

Three Bedroom/Den • Two Bath • 2,003 sq. ft.



## The Doral

Two Bedroom • Two Bath • 1,622 sq. ft.



Dimensions are approximate. Floor plans may vary.

## The Augusta

Three Bedroom/Den • Two Bath • 1,776 sq. ft.



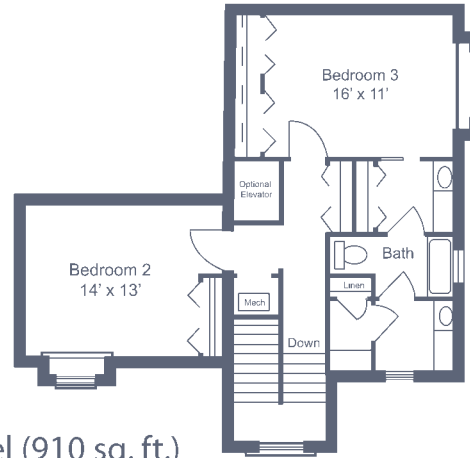
# Cypress Village

4600 Middleton Park Circle East • Jacksonville, FL 32224  
904-223-6100 • CypressVillageRetirement.com

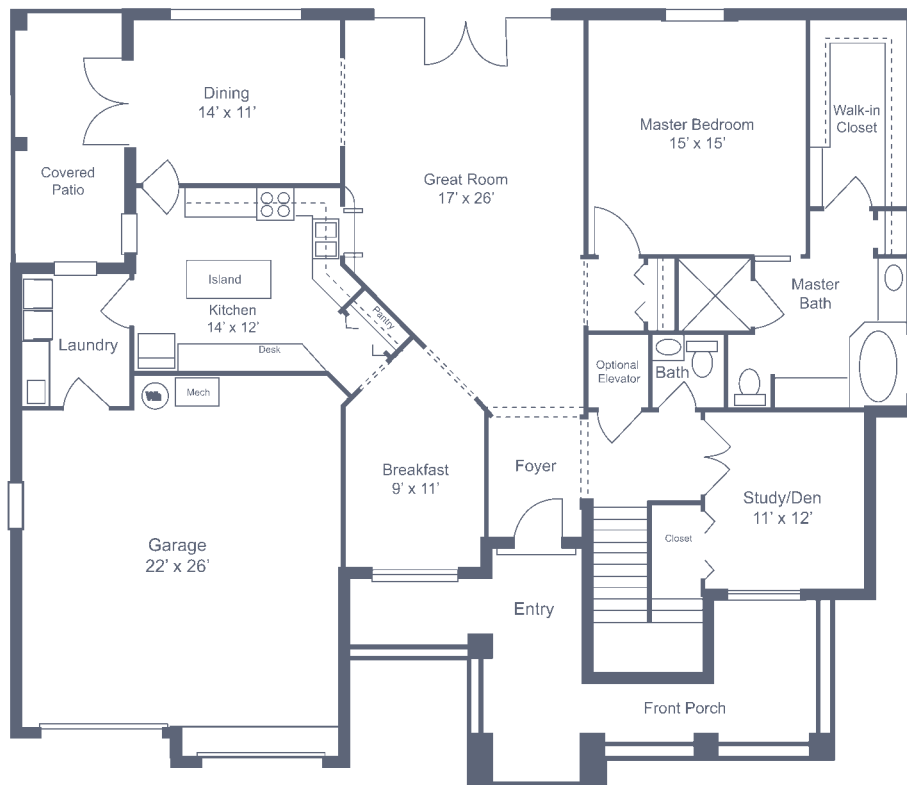
# Fairway Homes

## Riviera

Two Story • Three Bedroom/Den • Two-and-a-Half-Bath + Bonus Room • 2,944 sq. ft.



Second Level (910 sq. ft.)



First Level (2,034 sq. ft.)

Dimensions are approximate.  
Floor plans may vary.



## Cypress Village

4600 Middleton Park Circle East • Jacksonville, FL 32224  
904-223-6100 • CypressVillageRetirement.com



Managed by Life Care Services®